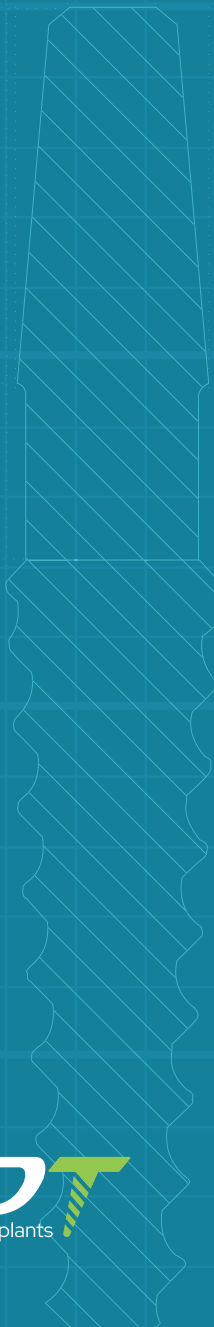
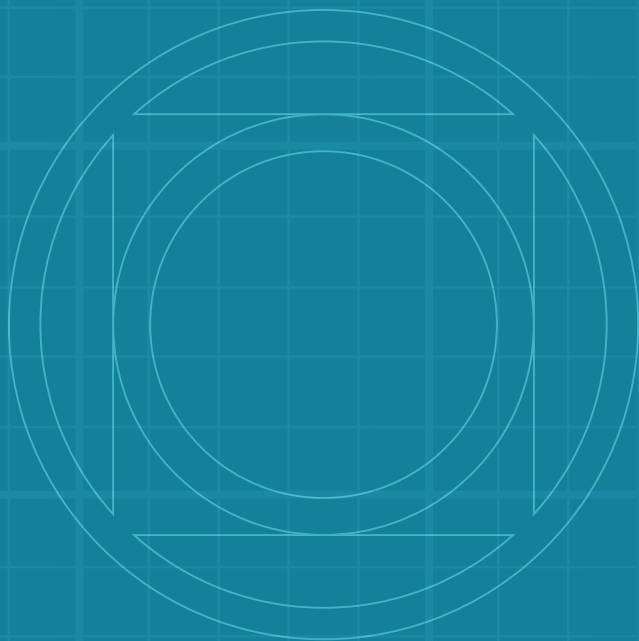




One-Piece Catalog 2026



DENTAL IMPLANTS

ONE-PIECE IMPLANTS

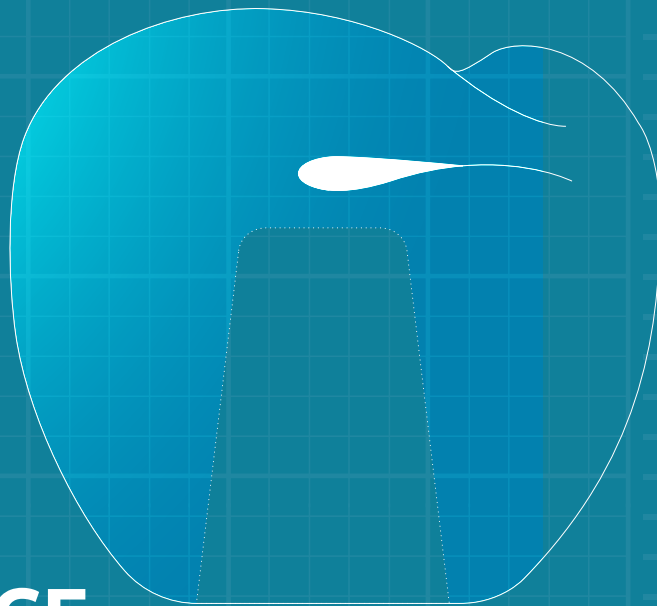
Components

OPI - One-Piece Implant

OPB - Flexible One-Piece Implant

SMOOTH-SURFACE "NECK"

TITANIUM GRADE 5 (Ti-6AL-4V ELI)



31

32-33

34-35

One-Piece

DENTAL IMPLANTS



ONE-PIECE IMPLANTS COMPONENTS

IMPRESSION COPING TRANSFER



CODE	OPC	
------	-----	--

IMPLANT ANALOGS

TYPE	For OPI	For Flexible - OPIB
L	19mm	18mm



CODE	AOP	ABOP
------	-----	------

HEX DRIVERS

	L (mm)	CODE
	15	HDOP
	18	HDO
	50	HDOL

FOR FLEXIBLE NECK

	18	RDOP
--	----	------

MANUAL WRENCH DRIVER ADAPTERS



HEX (mm)	CODE
175	HDLOF

MANUAL WRENCH DRIVER ADAPTERS



HEX (mm)	CODE
6.35	HRAL

ONE-PIECE IMPLANTS SURGICAL KIT BOX



CODE	BSP

Comfortable to use, organized logically, and clearly labeled. Please follow the recommended drilling protocol, to ensure optimal outcome. **Find more information on pages 136-137.**

FEATURES:

- All instruments are clearly labeled.
- The tools are made from durable Stainless Steel.
- Suitable for autoclaving, ensuring proper sterilization, at a temperature of 134°C.

OPI - One-Piece Implant

OPI implant is specifically designed for narrow ridges and tight spaces. The insertion of this implant is quick and simple one-stage procedure. This implant insertion saves time, reduces trauma for the patient, and produces an outstanding aesthetic at the final restoration. This versatile implant is mostly used for Multi Unit restorations with immediate loading in the maxilla & mandible with adequate bone tissue.

MATERIAL: Ti-6Al-4V ELI (Titanium Grade 5).

SURFACE TREATMENT: SLA - Sandblast, Large Grit, Acid-etch.

STERILIZATION: Gamma irradiation.

SPECIFICATIONS:



INTEGRATED ABUTMENT

- Increases the strength and stability of the by eliminating the weak connection point of the two-piece implant.



NECK

- Smooth-surface neck.



IMPLANT THREADS

- Single thread design.
- Bone condensing threads.
- Self-tapping.



SLA - SANDBLAST, LARGE GRIT, ACID-ETCH

- Enhances dental implant stability and osseointegration, improving long-term success rates.



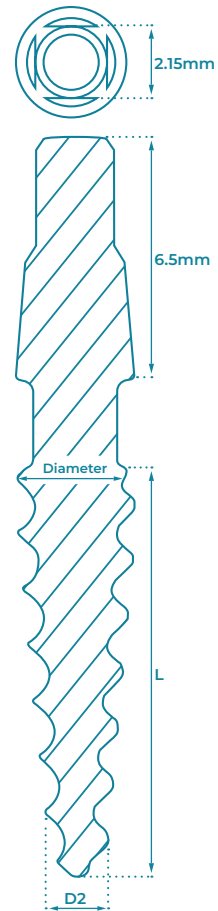
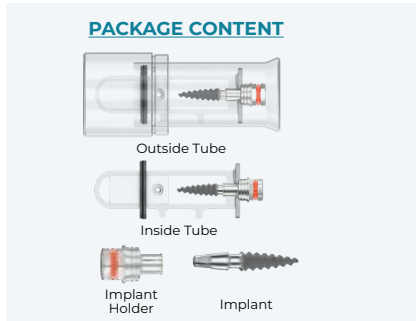
TAPERED THREAD AND TAPERED CORE BODY

- Excellent primary stability.
- Improves bone condensation during insertion.
- increased bone-to-implant contact along the implant body



NARROW ROUNDED APEX

- Easy insertion in areas with limited space such as laterals and central incisors.



Diameter	L (mm)	Code	D2
Ø2.4	10	P2410	Ø1.7
	11.5	P2411	
	13	P2413	
Ø2.8	10	P2810	Ø1.8
	11.5	P2811	
	13	P2813	
Ø3.0	16	P2816	Ø1.8
	10	P3010	
	11.5	P3011	
Ø3.3	13	P3013	Ø1.8
	16	P3016	
	10	P3310	
Ø3.75	11.5	P3311	Ø1.9
	13	P3313	
	16	P3316	
Ø4.2	6	P3706	Ø1.9
	8	P3708	
	10	P3710	
	11.5	P3711	
	13	P3713	
	16	P3716	
Ø5.0	6	P4206	Ø1.9
	8	P4208	
	10	P4210	
	11.5	P4211	
Ø5.0	13	P4213	Ø1.9
	16	P4216	
	18	P4218	
	10	P5010	
Ø5.0	11.5	P5011	Ø1.9
	13	P5013	
Ø5.0	16	P5016	

Diameter	Bone Type	Drilling Protocol							
		Marking Drill	Lance Drill Ø1.5	Lance Drill Ø2.0	Lance Drill Ø2.5	Lance Drill Ø2.8	Lance Drill Ø3.2	Straight Drill Ø3.65	
Ø2.4	Soft Bone	●	●	○	○	○	○	○	○
	Hard Bone	●	●	○	○	○	○	○	○
Ø2.8	Soft Bone	●	●	○	○	○	○	○	○
	Hard Bone	●	●	○	○	○	○	○	○
Ø3.0	Soft Bone	●	●	○	○	○	○	○	○
	Hard Bone	●	●	○	○	○	○	○	○
Ø3.3	Soft Bone	●	●	○	○	○	○	○	○
	Hard Bone	●	●	○	○	○	○	○	○
Ø3.75	Soft Bone	●	●	○	○	○	○	○	○
	Hard Bone	●	●	○	○	○	○	○	○
Ø4.2	Soft Bone	●	●	○	○	○	○	○	○
	Hard Bone	●	●	○	○	○	○	○	○
Ø5.0	Soft Bone	●	●	○	○	○	○	○	○
	Hard Bone	●	●	○	○	○	○	○	○

The suggested drilling protocol is only a recommendation and should not replace the doctor's opinion.

OPIB - Flexible One-Piece Implant

OPIB implant is specifically designed for narrow ridges and tight spaces. An optional bendable neck allows adjusting the abutment slope angle up to 20°, a very useful feature in limited space unparallel cases. The insertion of OPIB Implant is a quick and simple one-stage procedure. This implants save time, reduces trauma for the patient, and produces an outstanding aesthetic at the final restoration. This versatile implant mostly used for Multi Unit restorations with immediate loading in the maxilla & mandible with adequate bone tissue.

MATERIAL: Ti-6Al-4V ELI (Titanium Grade 5).
SURFACE TREATMENT: RBM - Resorbable Blast Media.
STERILIZATION: Gamma irradiation.

SPECIFICATIONS:



INTEGRATED ABUTMENT

- Increases the strength and stability of the by eliminating the weak connection point of the two-piece implant.



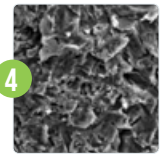
NECK

- Smooth-surface neck.
- Flexible up to 20°



IMPLANT THREADS

- Single thread design.
- Bone condensing threads.
- Self-tapping.



RBM - RESORBABLE BLAST MEDIA

- Promotes faster and stronger bone integration, enhancing the stability of dental implants.



TAPERED THREAD AND TAPERED CORE BODY

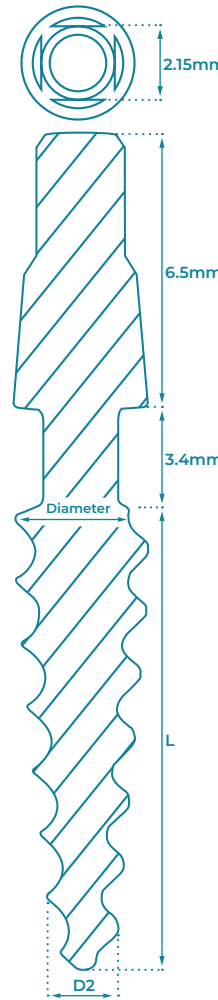
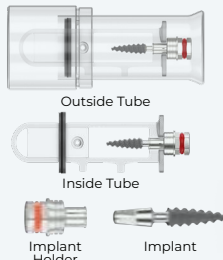
- Excellent primary stability.
- Improves bone condensation during insertion.
- increased bone-to-implant contact along the implant body



NARROW ROUNDED APEX

- Easy insertion in areas with limited space such as laterals and central incisors.

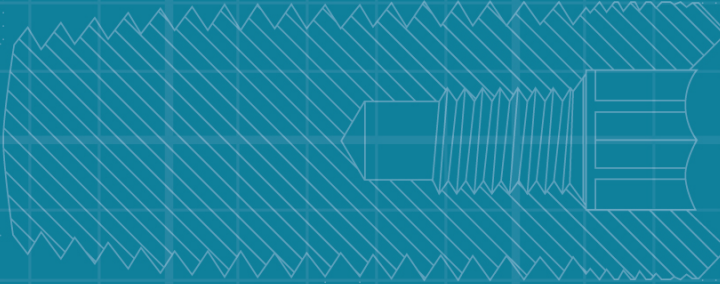
PACKAGE CONTENT



Diameter	L (mm)	Code	D2
Ø3.3	10	B3310	Ø1.8
	11.5	B3311	
	13	B3313	
Ø3.75	16	B3316	Ø1.9
	6	B3706	
	8	B3708	
	10	B3710	
	11.5	B3711	
Ø4.2	13	B3713	Ø1.9
	16	B3716	
	6	B4206	
	8	B4208	
	10	B4210	
Ø5.0	11.5	B4211	Ø1.9
	13	B4213	
	16	B4216	
	8	B5008	
	10	B5010	
Ø5.0	11.5	B5011	Ø1.9
	13	B5013	
	16	B5016	

Drilling Protocol		Marking Drill	Lance Drill Ø1.5	Lance Drill Ø2.0	Lance Drill Ø2.5	Lance Drill Ø2.8	Lance Drill Ø3.2	Straight Drill Ø3.65
Ø3.3	Soft Bone	●	●	○	●	●	●	●
Ø3.3	Hard Bone	●	●	○	●	●	●	●
Ø3.75	Soft Bone	●	●	○	●	●	●	●
Ø3.75	Hard Bone	●	●	○	●	●	●	●
Ø4.2	Soft Bone	●	●	○	●	●	●	●
Ø4.2	Hard Bone	●	●	○	●	●	●	●
Ø5.0	Soft Bone	●	●	○	●	●	●	●
Ø5.0	Hard Bone	●	●	○	●	●	●	●

• The suggested drilling protocol is only a recommendation and should not replace the doctor's opinion.



ALL SOLUTION FOR A PERFECT SMILE



www.gdentalt.com

Global Dental Transfers Ltd.

M Tower Building
Recha Freier 9
Beer Sheva
8489440
Israel

Tel: +1(201) 759-9990
Email: Info@gdentalt.com