

# CON - Spiral Implant

CON RP Implant is based on the popular **Conical Connection** with **SLA - Sand blast, double etched in acid surface treatment**. It has a tapered body with a tight seal interlocking hexagon conical connection that delivers the best aesthetic solution for all indications. Specifically designed to offer high primary stability, making it suitable for challenging situations such as soft bone or extraction sockets. CON RP demonstrates successful implementation across various bone types, providing both ease of insertion and minimal patient sensitivity. It's self-tapping and self-drilling features contribute to a simplified implantation process. CON RP Regular Platform is designed for posterior cases that require a wider base and helps achieve a natural molar emergence profile.

**CONNECTIONS:** Conical Connection NP 2.25mm (Narrow Platform).  
Conical Connection RP 2.65mm (Regular Platform).

**MATERIAL:** Ti-6Al-4V ELI (Titanium Grade 5).

**SURFACE TREATMENT:** SLA - Sandblast, Large Grit, Acid-etch.

**STERILIZATION:** Gamma irradiation.

## SPECIFICATIONS:

### CONNECTION

- NP 2.25mm (Narrow Platform), and Conical Connection RP 2.65mm (Regular Platform).



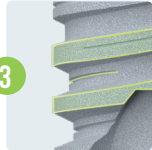
### TAPERED BODY WITH SPIRAL DESIGN

- The resemblance to natural root shape ensures outstanding primary stability, promotes bone preservation, and facilitates strong adhesion of soft tissues.



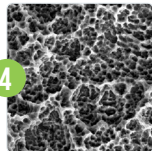
### AGGRESSIVE APICAL THREADS

- The wide spacing between threads enhances implant stability and promotes long-term tissue preservation.



### SLA - SANDBLAST, LARGE GRIT, ACID-ETCH

- Enhances dental implant stability and osseointegration, improving long-term success rates.



### SELF TAPPING SYSTEM

- Self-tapping.
- Self-drilling.
- Increases load distribution.

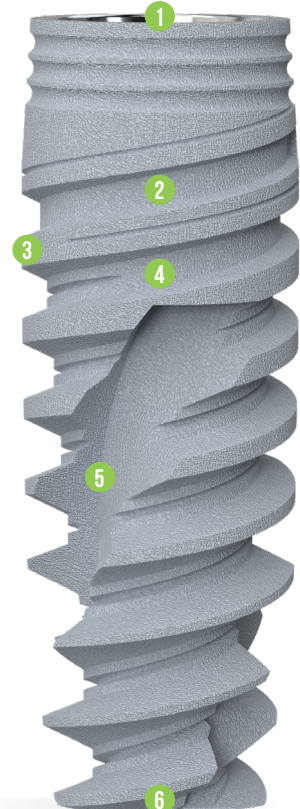
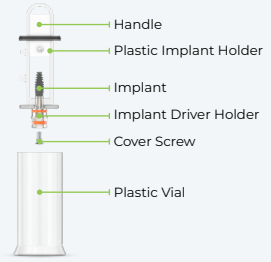


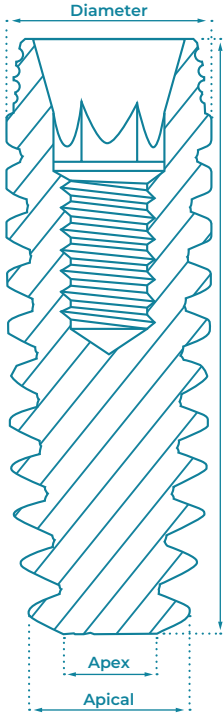
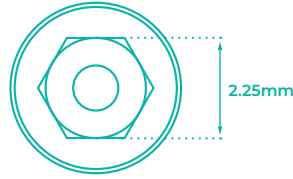
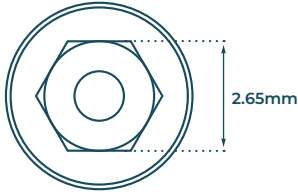
### ROUND APEX

- Enhances implant stability.
- Protects sinus from perforation, and minimizes the risk of anatomical structure damage.



## PACKAGE CONTENT





Diameter	L (mm)	Code	Apical	Apex
Ø3.5	8	NP0835	Ø3.45	Ø2.6
	10	RP1035		
	11.5	RP1135		
	13	RP1335		
	16	RP1635		
Ø4.3	6	RP0643	Ø4.1	Ø3.2
	8	RP0843		
	10	RP1043		
	11.5	RP1143		
	13	RP1343		
Ø5.0	16	RP1643	Ø4.65	Ø3.7
	6	RP0650		
	8	RP0850		
	10	RP1050		
	11.5	RP1150		
	13	RP1350		
	16	RP1650		

### Drilling Protocol

	Marking Drill	Ø2.0	Ø2.5	Ø2.8	Ø3.2	Ø3.65	Countersink Ø3.75x4.2	Ø4.2	Ø4.5
Ø3.5	●	○	●	●	●	●	●	●	○
Hard Bone	●	○	●	●	●	●	●	●	○
Ø4.3	●	○	●	●	●	●	●	●	○
Hard Bone	●	○	●	●	●	●	●	●	○
Ø5.0	●	○	●	●	●	●	●	●	○
Hard Bone	●	○	●	●	●	●	●	●	○

• The suggested drilling protocol is only a recommendation and should not replace the doctor's opinion.