

ABA - Spiral Implant

ABA Implant is a highly compatible implant solution based on the popular **Internal Hexagon connection** with **SLA - Sand blast, double etched in acid surface treatment**. With its tapered body and exceptional self-drilling capabilities, it establishes a strong and stable connection suitable for immediate loading. ABA Implant can be used in all types of surgical procedures - two stages, immediate loading, and flapless for all types of ridges. It works especially well on narrow ridges without needing prior bone grafting.

CONNECTION: Internal Hexagon 2.42mm.

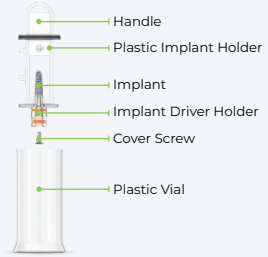
MATERIAL: Ti-6Al-4V ELI (Titanium Grade 5).

SURFACE TREATMENT: SLA - Sandblast, Large Grit, Acid-etch.

STERILIZATION: Gamma irradiation.

SPECIFICATIONS:

PACKAGE CONTENT



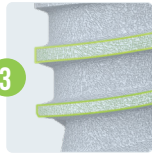
CONNECTION AND PLATFORM SWITCHING

- Internal Hexagon 2.42mm - One universal platform for all diameters.
- Minimizes crestal bone loss, promotes bone and soft tissue growth, improves natural aesthetics.



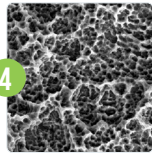
TAPERED BODY WITH SPIRAL DESIGN

- Optimal soft tissue support .
- Excellent primary stability.
- Improves bone condensation during insertion.



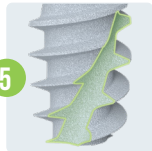
AGGRESSIVE APICAL THREADS

- Allow for more aggressive bone engagement for indications such as immediate extraction sockets, poor bone quality, and immediate loading.



SLA - SANDBLAST, LARGE GRIT, ACID-ETCH

- Enhances dental implant stability and osseointegration, improving long-term success rates.



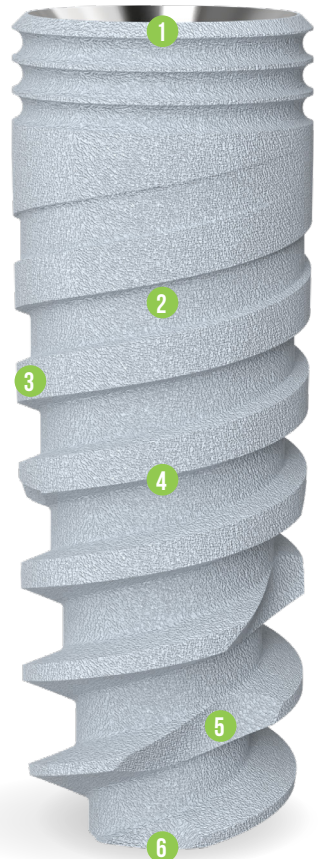
SELF TAPPING SYSTEM

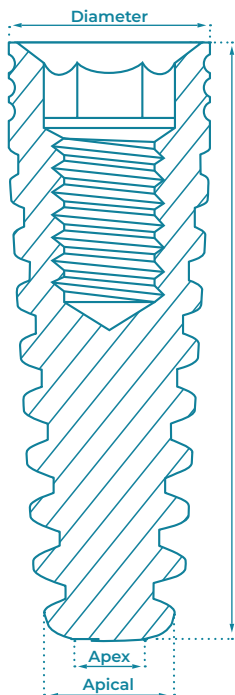
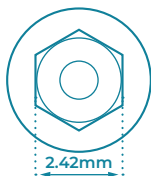
- Self-tapping.
- Self-drilling.
- Increases load distribution.



APEX

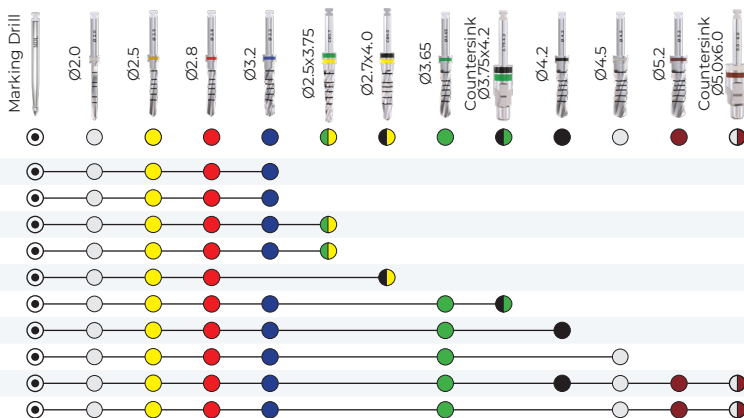
- Enhances implant stability.
- Sharp and deep threads





Diameter	L (mm)	Code	Apical	Apex
Ø3.5	8	A3508	Ø3.1	Ø2.4
	10	A3510		
	11.5	A3511		
	13	A3513		
	16	A3516		
Ø3.75	8	A3708	Ø3.75	Ø3.1
	10	A3710		
	11.5	A3711		
	13	A3713		
	16	A3716		
Ø4.2	6	A4206	Ø3.95	Ø3.2
	8	A4208		
	10	A4210		
	11.5	A4211		
	13	A4213		
Ø5.0	6	A5006	Ø4.6	Ø4.1
	8	A5008		
	10	A5010		
	11.5	A5011		
	13	A5013		
Ø6.0	6	A6006	Ø5.6	Ø5.1
	8	A6008		
	10	A6010		
	11.5	A6011		
	13	A6013		

Drilling Protocol



The suggested drilling protocol is only a recommendation and should not replace the doctor's opinion.