

EVA - Mountless Implant

EVA Implant is a highly compatible implant solution based on the popular **Internal Hexagon connection** with **RBM - Resorbable Blast Media surface treatment**. It is ideal for both one-stage and two-stage implantation protocols and performs exceptionally well across various types of bone tissue, including immediate loading in post-extraction sockets. The implant's cylindrical-conical body and progressive threading ensure exceptional fixation and a bone-condensing effect, even in cases where bone quality is challenging. It features a reverse-tapered neck and platform switching to optimize the preservation of bone and soft tissue volumes, providing excellent aesthetics and stability.

- CONNECTION:**
- Internal Hexagon 2.42mm.
 - Slim Platform - Internal Hexagon 2.0mm.

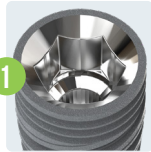
MATERIAL: Ti-6Al-4V ELI (Titanium Grade 5).

SURFACE TREATMENT: RBM - Resorbable Blast Media.

STERILIZATION: Gamma irradiation.

SPECIFICATIONS:

PACKAGE CONTENT



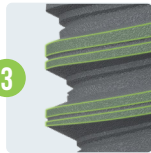
CONNECTION AND PLATFORM SWITCHING

- Internal Hexagon 2.42mm - One universal platform for all diameters.
- Minimizes crestal bone loss, promotes bone and soft tissue growth, improves natural aesthetics.



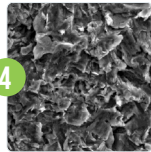
CYLINDRICAL - CONICAL SHAPE

- Offers unparalleled fixation and a bone-condensing effect, even in challenging bone quality scenarios.
- Enhances implant stability.



DOUBLE PROGRESSIVE THREADS

- Enhances load distribution within the cortical bone, promoting strength and durability.
- Deeper threads towards the bottom facilitate bone condensing in the cancellous layer, increasing implant stability and longevity.



RBM - RESORBABLE BLAST MEDIA

- Promotes faster and stronger bone integration, enhancing the stability of dental implants.



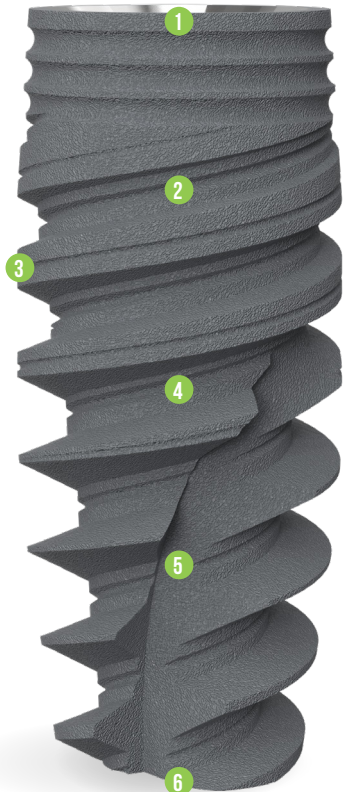
SELF TAPPING SYSTEM

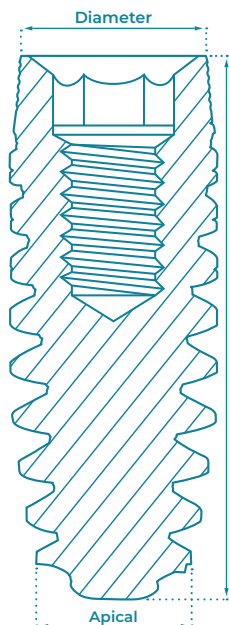
- Increased thread depth and cutting edges.
- Self-drilling.
- Increases load distribution.



AGGRESSIVE APICAL APEX

- Enhancing bone condensing.
- Features expanding threads at the bottom, offering a secure fit and sealing effects.
- ensures optimal implant stability and minimizes the risk of micromotion, promoting reliable osseointegration and long-term success.





Diameter	L (mm)	Code	Apical
Ø3.0	8	E3008	Ø2.0
	10	E3010	
	11.5	E3011	
	13	E3013	
Ø3.3	8	E3308	Ø2.0
	10	E3310	
	11.5	E3311	
	13	E3313	
Ø3.5	8	E3508	Ø2.5
	10	E3510	
	11.5	E3511	
	13	E3513	
Ø3.8	16	E3516	Ø2.8
	8	E3808	
	10	E3810	
	11.5	E3811	
Ø4.2	13	E3813	Ø3.2
	16	E3816	
	8	E4208	
	10	E4210	
Ø4.5	11.5	E4211	Ø3.5
	13	E4213	
	16	E4216	
	8	E4508	
Ø5.0	10	E4510	Ø4.0
	11.5	E4511	
	13	E4513	
	16	E4516	
Ø5.0	8	E5008	Ø4.0
	10	E5010	
	11.5	E5011	
	13	E5013	
	16	E5016	



Scan QR code for EVA drilling protocols



- The suggested drilling protocol is only a recommendation and should not replace the doctor's opinion



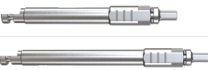

MOUNTLESS COMPONENTS



HEX DRIVERS

	HEX (mm)	L (mm)	CODE
	 2.42	10	HD2410-ML
		15	HD2415-ML

MOTOR MOUNTS

	HEX (mm)	L (mm)	CODE
	 2.42	22	MM2422-ML
		28	MM2428-ML